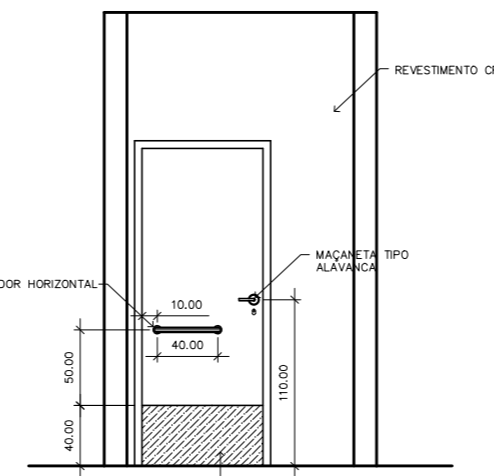
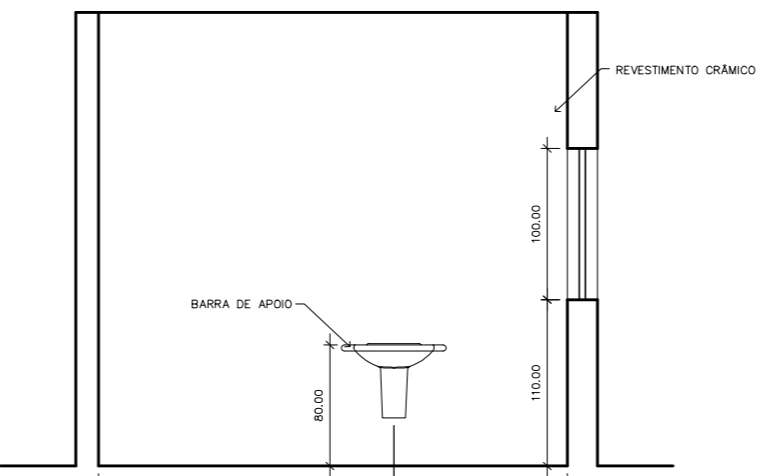


CORTE LONGITUDINAL AA
(ESC.: 1:100)

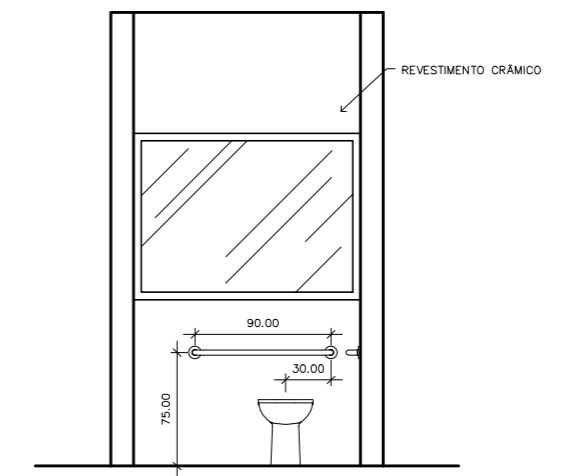
QUADRO DE ÁREAS (m ²)	
TERRENO	2.549,75
ÚTILIDADE ÚTIL	318,54
PRIMEIRO PAVIMENTO	150,89
ÚTILIDADE ÚTIL	32,90
TOTAL	568,13



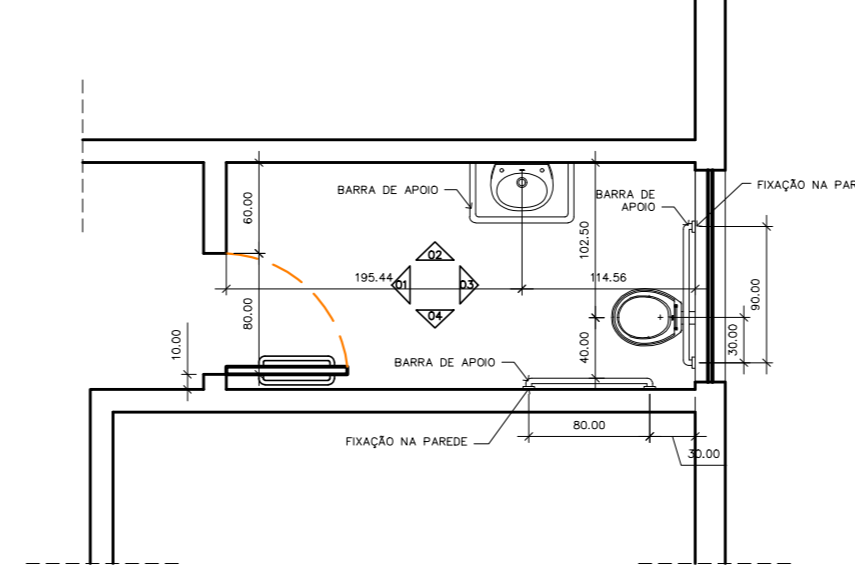
VISTA 1
ESC. 1:25



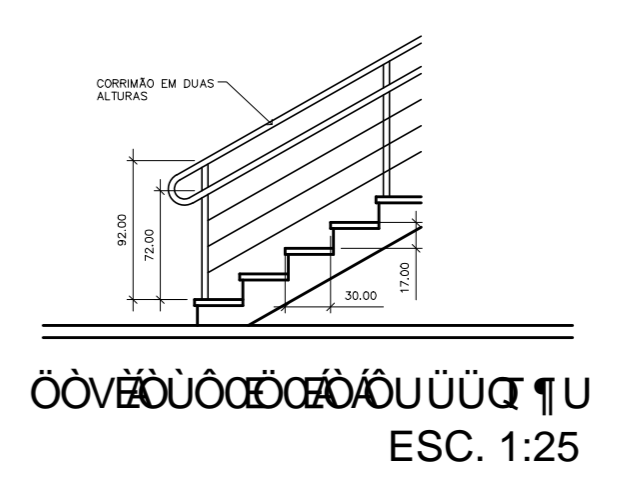
VISTA 2
ESC. 1:25



VISTA 3
ESC. 1:25



VISTA 4
ESC. 1:25



VISTA 5
ESC. 1:25

	PROJETO DE ARQUITETURA	02/03
	LOCAL: UFRPA - Av. Miguel Prisco	
	PROJETO: SEJEL	
	PROJETO: Arq. Marcelo Candido - CAU 72.508-0	ESCALA: 568,13 m ² INDICADA